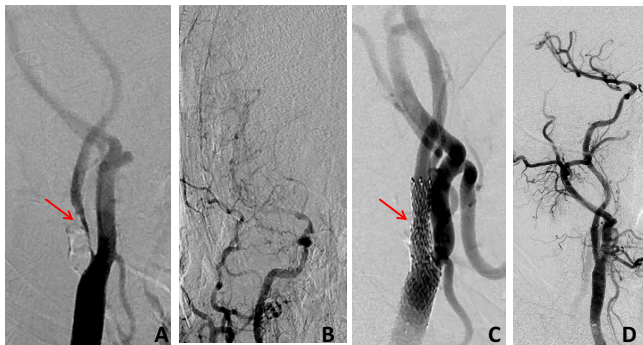


## Case Study

### Carotid and Vertebral Artery Stenosis

#### Stenting for high grade calcified Stenosis

A 68-year old male presented with recurrent transient ischaemic attacks in right middle cerebral artery.



A- DSA shows a severe calcified stenosis at origin of right internal carotid artery with slow flow in the distal ICA

B- Angiogram shows slow flow in distal ICA

C- Angioplasty followed by stent placement was done with protection device resulting in complete recanalization of the ICA

D- Improved flow in the intracranial arteries.