

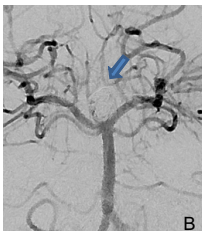
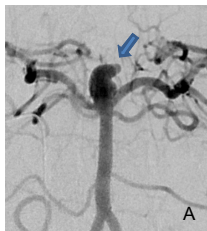
Case Study

Cerebral Aneurysm

Embolization of Basilar Top Aneurysm

A 24-year old male presented with SAH due to basilar top aneurysm. A projection was seen from the top of the aneurysm indicating the rupture site. Coil embolization was performed with complete occlusion of the aneurysm (B).

Post-embolization shows the coil mass (Yellow) in relationship to the parent vessel (red in colour).



A- Basilar top aneurysm

B- Post coiling angiogram showing complete occlusion of aneurysm

C- Post embolization showing patient arteries (red). Coil mass is seen as yellow