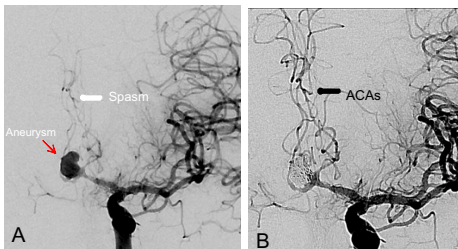


Case Study

Cerebral Aneurysm

Embolization of Aneurysm associated with Severe Vasospasm

64 yr. old lady with SAH drowsiness. Angiogram revealed a anterior communicating artery aneurysm (arrow) associated with severe vasospasm (thick arrow) of B/l ACAs. Such spasm indicated impending infarctions intra-arterial dilatation followed by coil embolization done in same sitting with improved perfusion in the anterior cerebral artery territory.



A- Angiogram shows anterior cerebral artery aneurysm with severe spasm of B/l anterior cerebral arteries

B- Intra-arterial dilatation followed by coil embolization done. Post coiling angiogram shows increased flow in the arteries with occluded aneurysm.